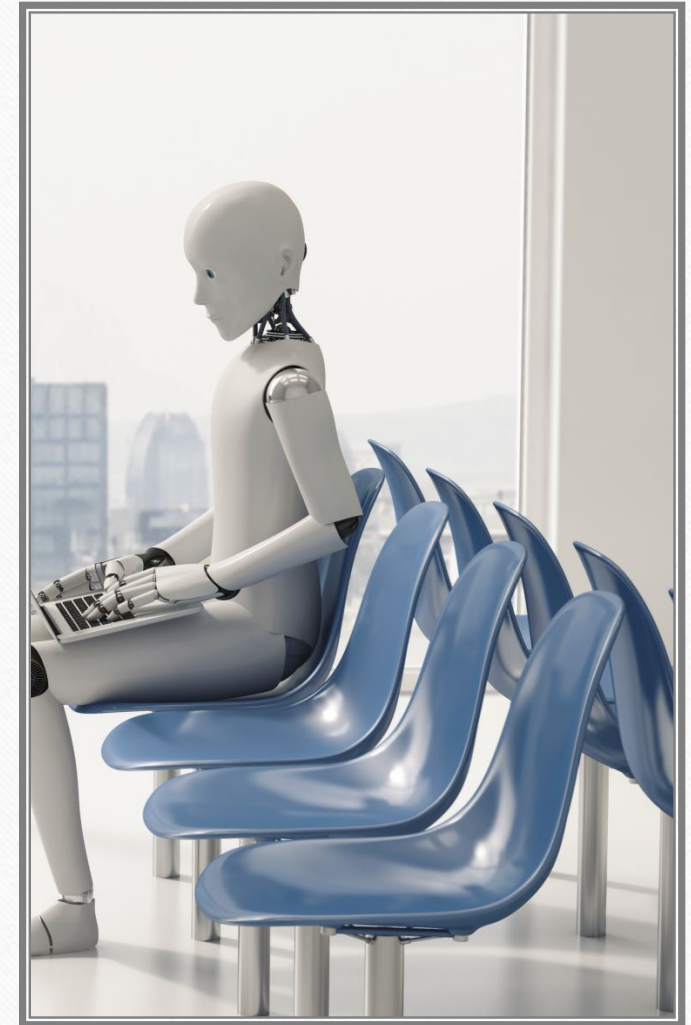


Artificial Intelligence (AI) and the Young Chartered Accountants

The Win – Win Approach

Dr Greg U. Ezeilo, FCA
Executive Chairman, AiRS



Nov. 2023



The Worldview of AI
Philosophy

Questions and
Answers

AI as an emulation of human
intelligence and a Disruptive
Technology

AI Takeaway

AI and the
Young chartered
Accountants—
Agenda

Classical AIs in
World Economy

Reflections

AI and the Young Chartered
Accountants—How do you connect?



AI Philosophy and the Worldview...

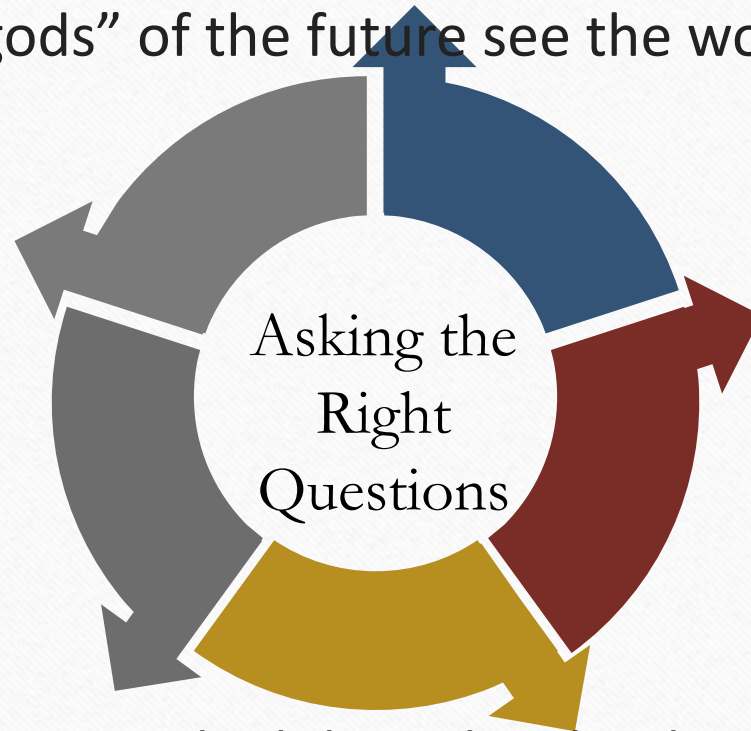
In his book—*Who Will Rule the Coming 'Gods' – The Looming Spiritual Crisis of Artificial Intelligence*

Dr. Wallace Henley while applauding the flourishing new Kingdom Economy orchestrated by AI raised some critical moral issues on AI technology

AI Philosophy and the Worldview...

How do the programmers the
“gods” of the future see the world?

What are the “permanent
things that will be
constants in the AI
machine? meaning that no
matter where their self-
learning takes them these
will be immovable



How can “principle” get
into the logic-systems of
an AI machine?

What “principles” would the
programmers install?

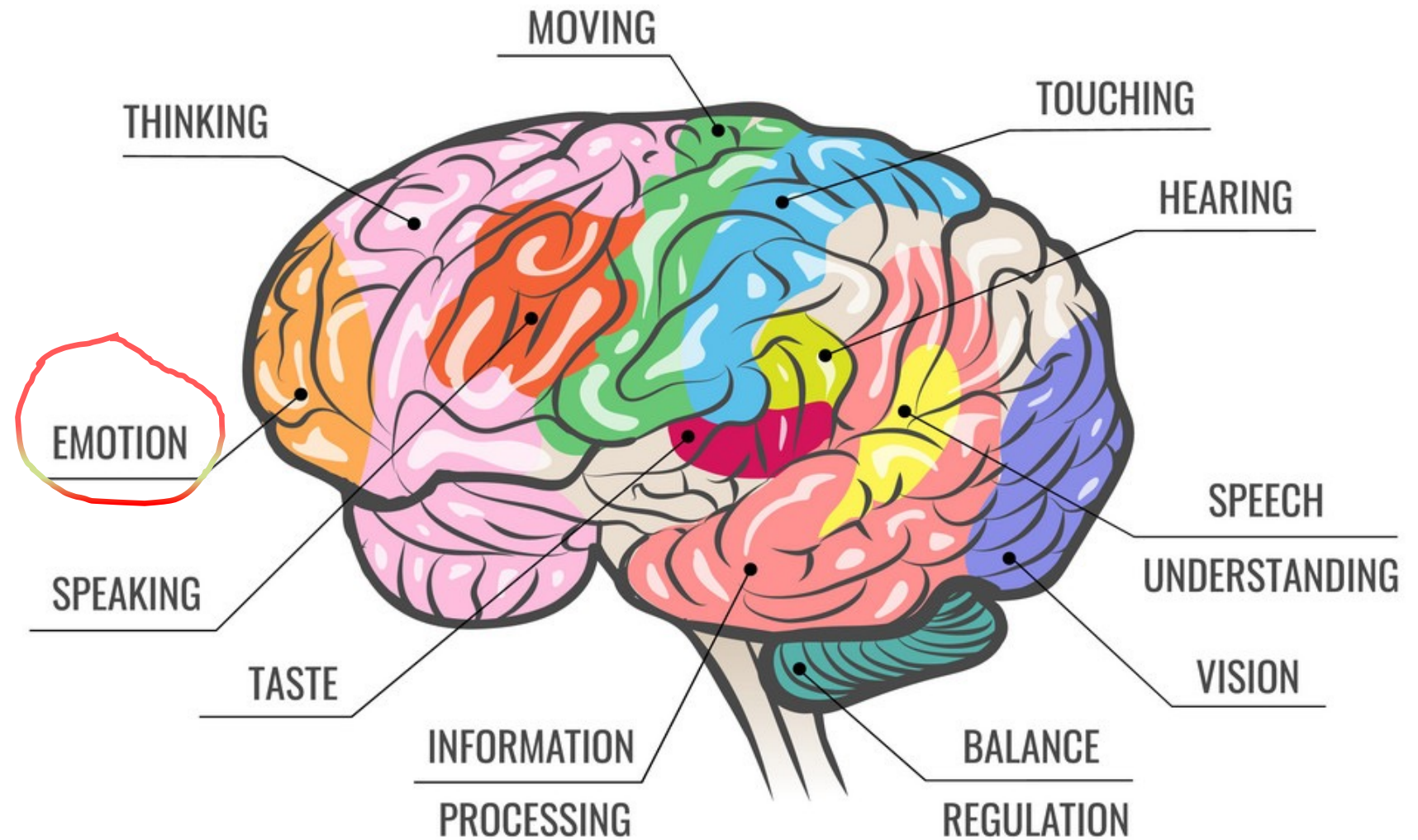
What are the spiritual, philosophical, ethical, and moral
beliefs that humans will wire into *imago hominis*, and how
will they do it?

AI Philosophy and Worldview....

- To answer these vital questions associated with the AI Worldview..

One needs to understand the worldview of AI makers that gets programmed into the machines.

AI as an Emulation of Human Intelligence (HI)



Expert Systems/Artificial Intelligence

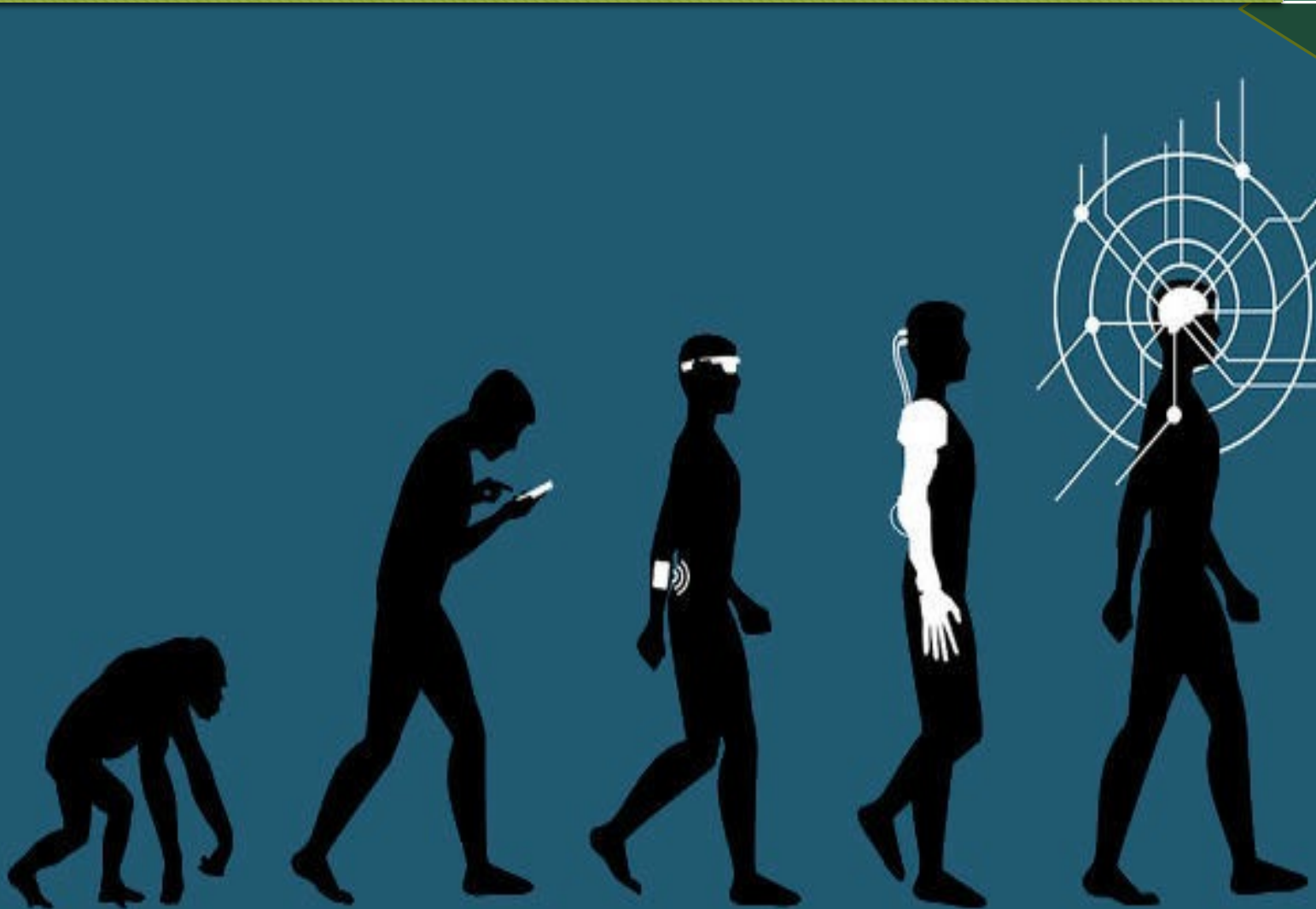
Artificial Intelligence (AI) with the greatest impact

Knowledge Base

This term is used to represent phenomenon associated with the fifth generation computers, endowed with knowledge and *artificial intelligence*

AI AN EMULATION OF HI...

Expert Systems



These systems, which are knowledge and experience based are geared towards capturing the wisdom of experts and holding them electronically. The wisdom are then used to make expert decisions, given certain facts obtained through questions and answers.

Expert Systems

AI—an emulation of HI



They will have the ability to accept, understand and convey information in the form of written and spoken *natural languages*, and visual images

The computer will be *knowledge-based* rather than data-based

It will be capable of making its *judgments* and solutions within a given field of knowledge.

Expert Systems

AI AN EMULATION OF HI...



It will not follow a predetermined set of instructions, instead will utilize sets of rules derived from its knowledge. It will be told what to do and not how to do it

The system will work by breaking problems and requirements into smaller and smaller units until the

points where direct solutions are applicable.

As the project succeeds, we now have computers that can interface with the world:



Read books


Write texts/serve as virtual assistance

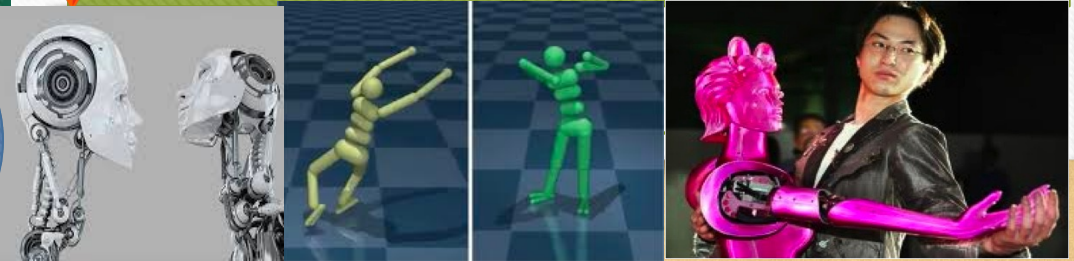
Drive vehicles/vessels

Listen and speak to people

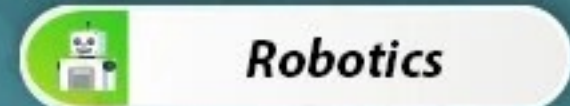
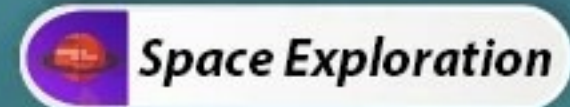
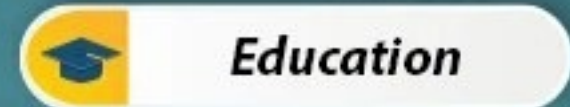
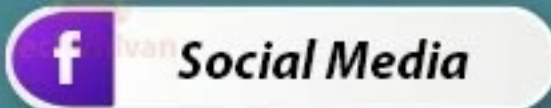
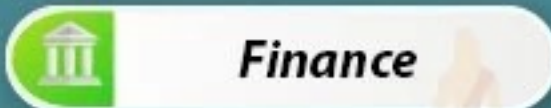
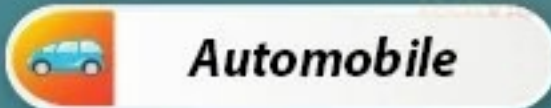
Create images and other human activities

WHAT WE HAVE
.....

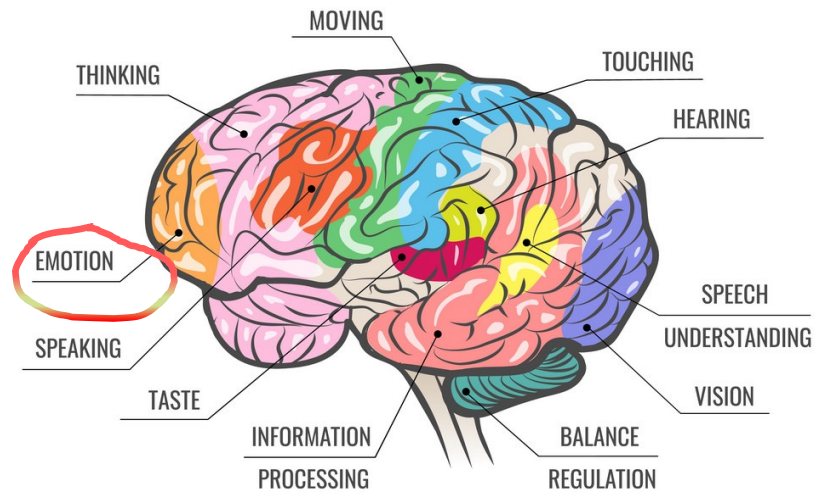
 The Future is Great! Isn't it?



Applications of AI



The Age of Singularity and Strong AI



Any Limits
for the AI?



Military Technology

Aiming, Defending, and
Moving are done
simultaneously by us.

But with AI technology, the
tank will be able to auto-detect
enemy units and take action.



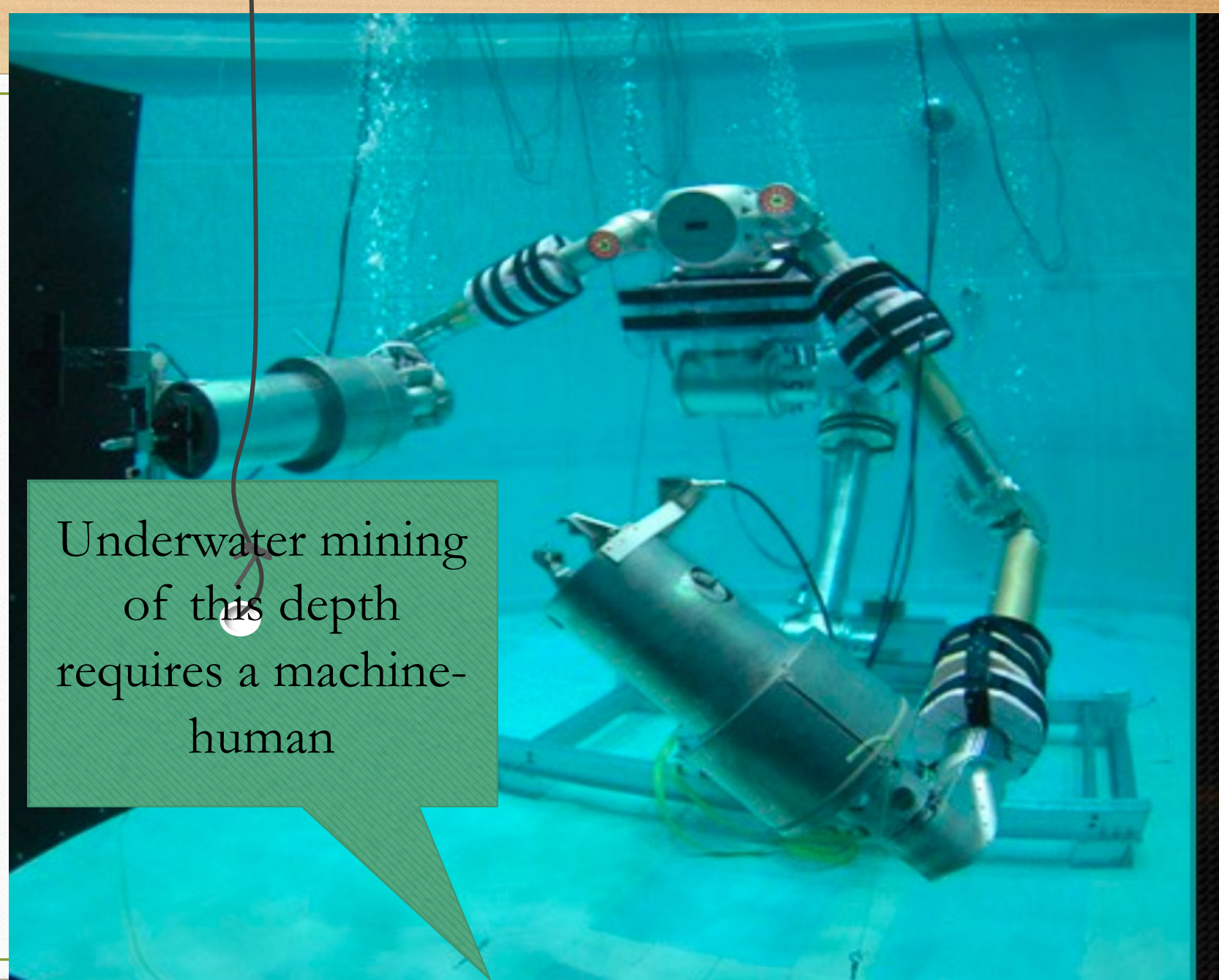
Any Limits
for the AI?

Humans need provisions
for: Water, Recycling,
Food, Space Radiation and
Psychological issues of
confinement

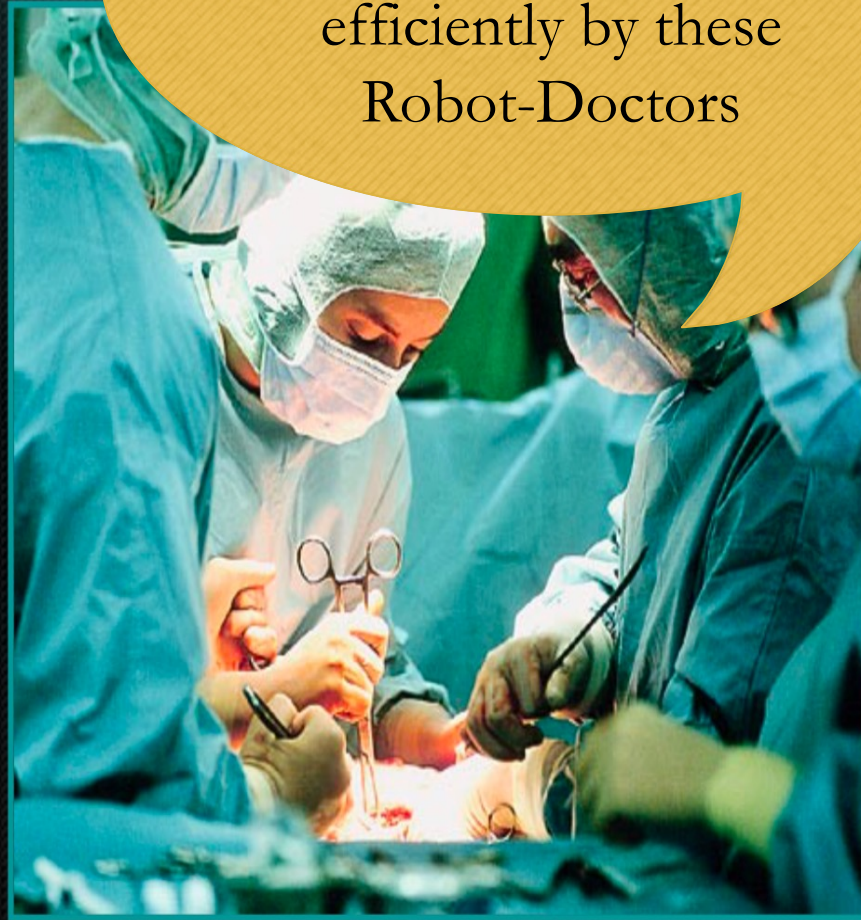


Any Limits for the AI?

Underwater mining
of this depth
requires a machine-
human

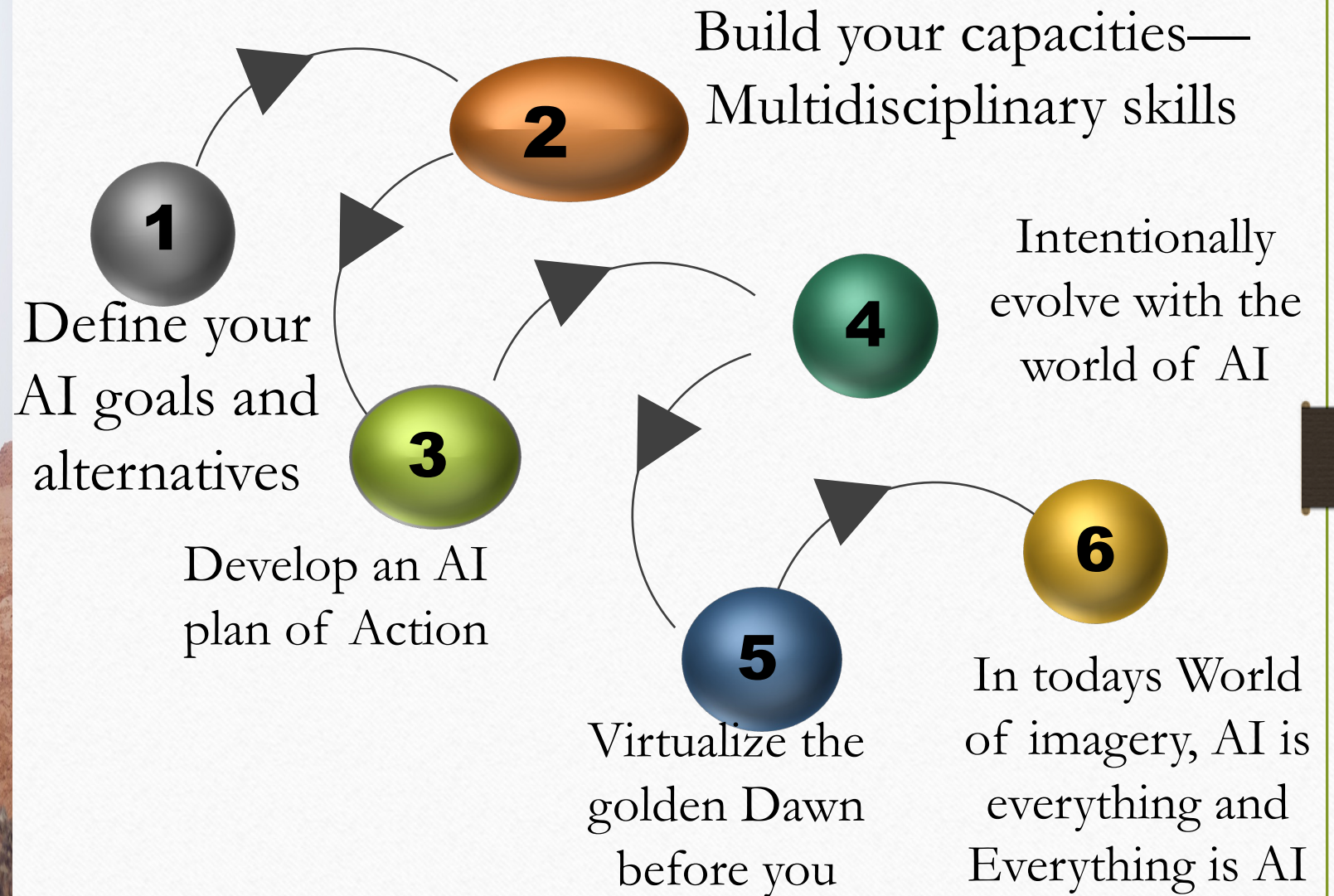


Medical Research and delicate operations can be performed VERY efficiently by these Robot-Doctors



Any Limits for the AI?

AI
Handshake—
A Win-Win for
Chartered
Accountants....



Reflections, Conclusions and Takeaways...

Inspiration

Engage
your Minds

Get
Connected

Envision a
new Future

Grow in this
Profession

Be
Authentic at
all times!

As brand new Chartered Accountants
what do you takeaway from this
conversations

thank
YOU
SO MUCH



Dr. Greg Ugochukwu Ezeilo, FCA
+234-803-300-8104; 070-8892-4312
email: gregezeilo@signalhouse.org



Questions

